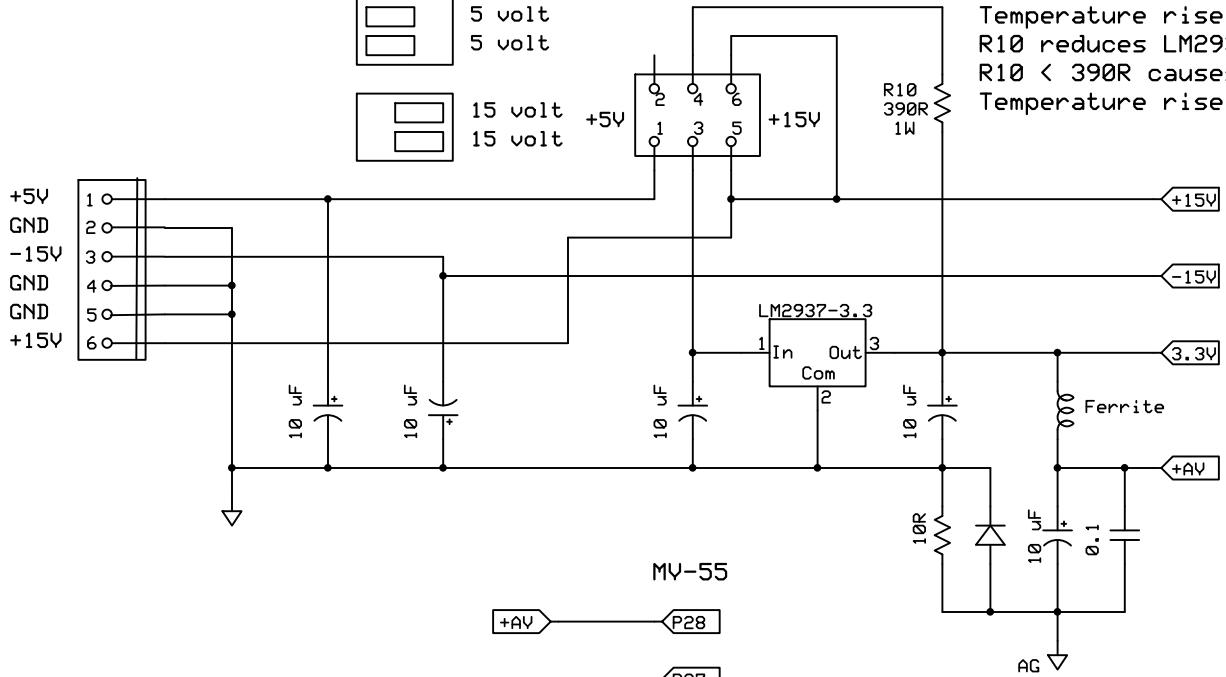
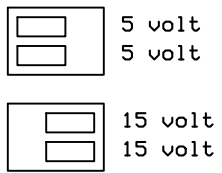


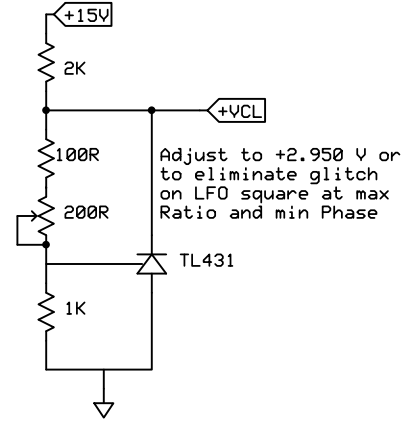
Notes: T1 - T5 require trimming for exact +/-5V and 0/+5V ranges
 Adj T3&T5 for 10V pk-pk; Adj T2&T4 for symmetry; Adj T1 for 0V level
 Mount R1, R2, T1, D1 on switch
 R3A-R3D linearize the Controls (or omit and use 10K potentiometers)

ModularSynthesis		
DJB-020 Tap Tempo LFO		
David J. Brown	Rev 1.2 2/15/2014	Input & Output

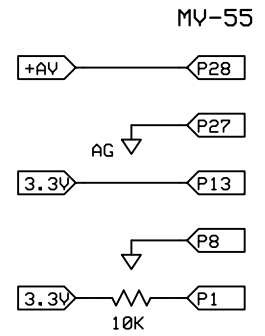
Voltage selection



Temperature rise for LM2937-3.3 is 17 degrees C
 R10 reduces LM2937-3.3 dissipation from 1W to 0.65W
 R10 < 390R causes startup issues with LM2937-3.3
 Temperature rise for R10 is 6 degrees C



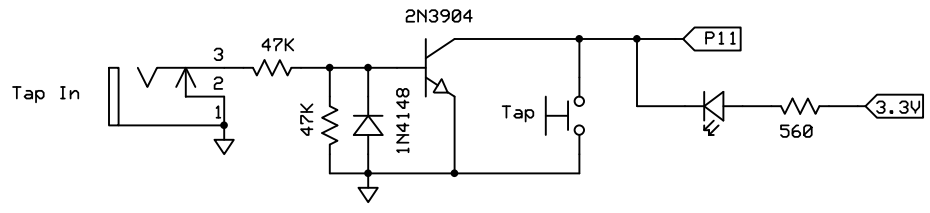
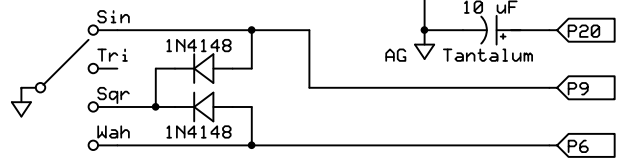
Adjust to +2.950 V or to eliminate glitch on LFO square at max Ratio and min Phase



Power Consumption

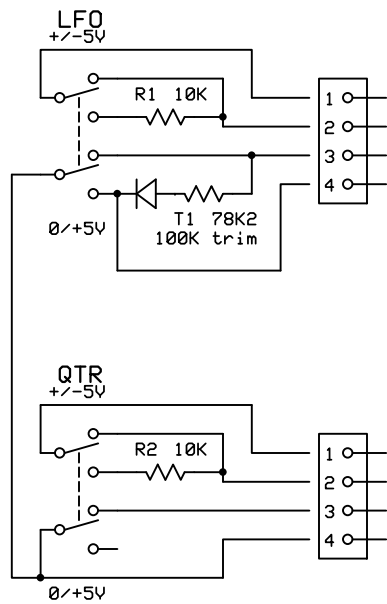
	+5V	+15V	-15V
+5 and +/-15V	88 mA	48 mA	42 mA
+/- 15V only	n/a	136 mA	42 mA

Waveform



Notes: 0.1 uF decoupling on all IC power pins
 MV-55 pins denoted by $\langle P_{xx} \rangle$

ModularSynthesis		
DJB-020 Tap Tempo LFO		
David J. Brown	Rev 1.2	MV-55 and Power
	2/15/2014	



ModularSynthesis

DJB-020 Tap Tempo LFO

David J. Brown

Rev 1.1

5/13/2012

Wiring